



ANALYSETTE 28

**Dynamic Image Analysis
of Particle Shape and Size**

NEW



ANALYSETTE 28

Dynamic Image Analysis of Particle Shape and Size



ANALYSETTE 28 ImageSizer
ANALYSETTE 28 ImageTec

NEW extra-wide measuring range, individually adaptable

NEW high-performance camera with telecentric lenses

NEW extensive library for morphological analysis

NEW practical tools for reliable quality monitoring

NEW fast, simple operation via SOP control

NEW freely editable report generator for individual measurement reports

BRILLIANTLY SIMPLE

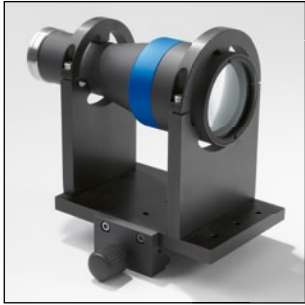
Both models of the new **FRITSCH ANALYSETTE 28** are ideal for all applications where not only the particle size is measured but especially reliable statements about the particle shape are of importance. The design of the **ANALYSETTE 28** is brilliantly simple, featuring a high-resolution camera, the extra-wide measuring range can be individually adapted - and analysis with the new **FRITSCH Cloud** is unbeatably simple. For absolutely reliable quality control in three steps. Fast, safe, easy.

- ⌚ **Especially robust – brilliantly simple to operate**
With these properties, the **ANALYSETTE 28** is ideal for quality control in the industrial sector.
- ⌚ **The fast alternative to sieving**
If you perform many and frequent sieve analyses, the **ANALYSETTE 28** is the ideal alternative – fast and easy in just three motions!
- ⌚ **Highest resolution for even smallest particles**
The **ANALYSETTE 28** is equipped with one of the most powerful industrial cameras. Its 5 megapixels and telecentric lenses guarantee the highest possible image accuracy - and its Ethernet connection to the computer ensures the fastest possible data transmission.
- ⌚ **Brilliant software for direct analysis**
The innovative image analysis software with an extremely large library of parameters for morphology description, and the unique **FRITSCH Cloud**, makes evaluation in real-time especially easy and flexible.

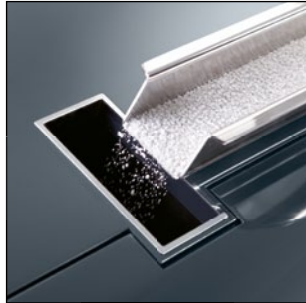
20 μm – 20 mm

ANALYSETTE 28 ImageSizer

Fast analysis of particle shape and size **> of powders and bulk solids**



Lens changer



Optimal feeding speed



Measuring range 20 μm – 20 mm

Fast lens change

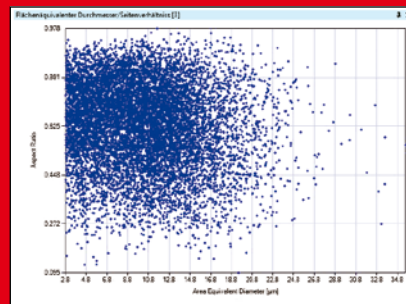
For equipping your ANALYSETTE 28 ImageSizer, choose between four different, easy interchangeable telecentric lenses. The measuring range can be optimally adapted to the measuring task by selecting the suitable lens. The instrument recognises the selected lens and confirms the selected measuring range.

Adapted feeding speed

The feed rate of the sample on the conveyance channel is according to the material automatically adjusted by AutoCheck, and saved in the SOP. In order to guide the sample material precisely into the measuring cell at the optimum depth of field even under rapid conveying conditions, the feeder chute can be simply adjusted with a dial.

Brilliantly simple analysis in real-time: the FRITSCH Cloud

Even evaluation of the measuring results is uniquely simple with the ANALYSETTE 28. The brilliant idea behind this: The analysis image shows all the particles in the form of a cloud – the FRITSCH Cloud. It offers many more possibilities for recognising the most important measurement statements at a glance. Its x-axis and y-axis can be freely defined from an extensive library of shape parameters and adapted exactly to each task. For direct visual evaluation: brilliantly simple, uniquely flexible.



Oversized grains are recognised by both models of the ANALYSETTE 28 fast and safely directly in the cloud - with an extremely low detection limit.

ANALYSETTE 28 ImageTec

Fast analysis of particle shape and size **> in suspensions and emulsions**



Lens revolver



Measuring cell in practical cartridges



Measuring range 1 μm – 2 mm

Unique lens revolver

With 5 telecentric high-performance lenses which adjust completely automatic. The optimal lens required for the desired measuring range is simply selected using the input mask and can be saved in the SOP.

Optimal dispersion

For dispersion, the sample material or the emulsion to be analysed is pumped through the measuring cell in a closed liquid circulation system. The illuminated ultrasonic bath with freely adjustable ultrasonic-intensity ensures optimal dispersion - and the powerful centrifugal pump with individually variable speed ensures optimal transport of the sample through the measuring circuit.



Single image analysis

direct measurement of each particle is possible from each individual image.



Agglomerates can be recognised and specifically separated during the evaluation.

FRITSCH Plus: Even external images, for example from a microscope, can be loaded and evaluated without problems in the ANALYSETTE 28 evaluation software. Your advantage: A high-value image analysis software which is already included in the price.



Fritsch GmbH
Milling and Sizing
Industriestrasse 8
55743 Idar-Oberstein
Germany
Phone +49 67 84 70 0
Fax +49 67 84 70 11
info@fritsch.de
www.fritsch.de

Concept and design: Zink und Kraemer AG, Trier - Cologne, www.zuk.de

www.fritsch-sizing.com

Technical specifications are subject
to change without notice.